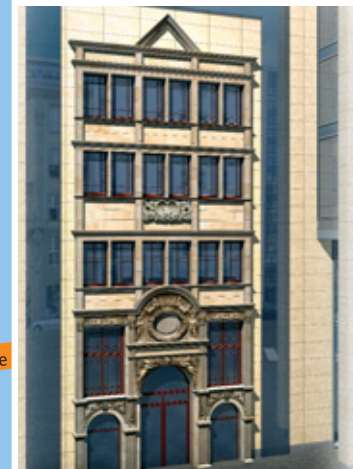
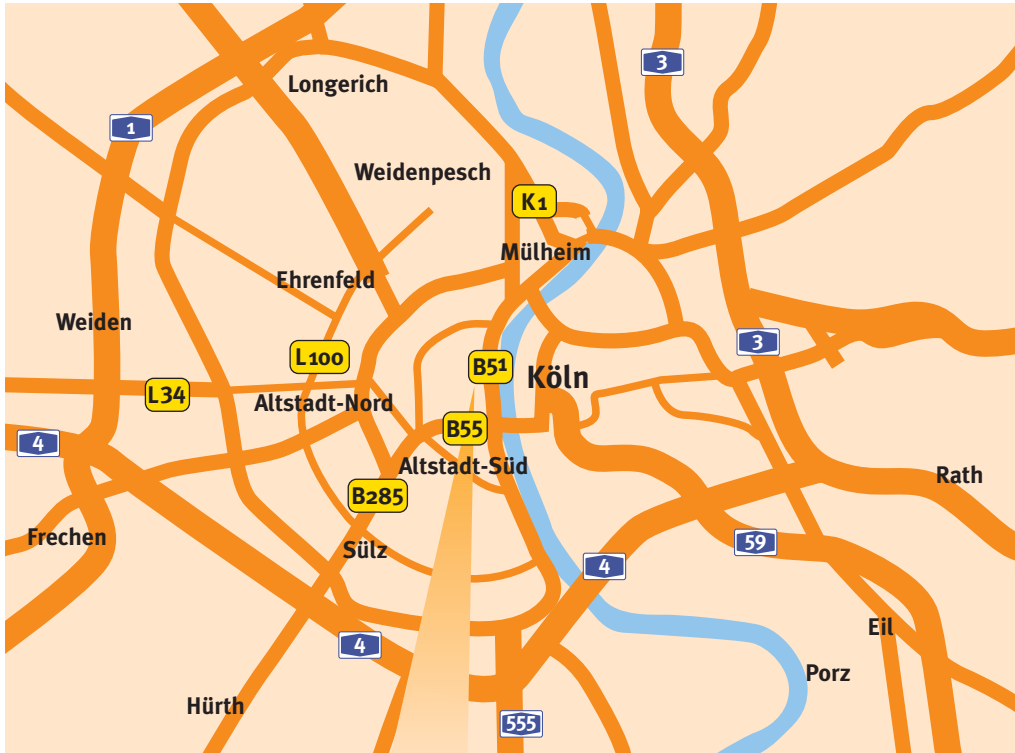


Getting to Drees & Sommer Infra Consult and Development Management in Köln

DREES & SOMMER

Drees & Sommer
 Infra Consult and
 Development Management
 Niederlassung Rhein-Ruhr
 Große Sandkaul 2
 50667 Köln
 Phone +49 221 27079-595
 Fax +49 221 27079-590

www.dreso.com



By car:

From the A1 autobahn: Take the “Köln-Lövenich” exit, heading towards “Zentrum” (Center). Follow the “Aachener Strasse” (later “Pipinstraße”) towards the city. Do a U-turn at the InterContinental hotel, and turn into the first street on the right: “Grosse Sandkaul” (multistory parking available).

From the A57 autobahn: Drive towards “Zentrum” (Center) through the underpass and immediately right onto “Gladbacher Strasse”. Follow this into the city, turning right at the roundabout into “Marzellenstrasse”. Turn left into the “Komödienstrasse”, get into the right lane and turn right into the “Domunterführung” (cathedral underpass). After the traffic light on the right (“Am Hof”) follow the road and turn left into “Unter Goldschmied”. Turn right into Gürzenichstraße. Turn left into “Große Sandkaul”.

From the A3 autobahn (“Olpe”): Approach via “Zoobrücke” (Zoo bridge), taking the second exit “Köln-Deutz” towards “Kölnarena” via the “Deutzer Brücke” (Deutz bridge). Go straight ahead across the “Augustinerstrasse” into

“Pipinstraße”, and then turn right into “Große Sandkaul” (multistory parking available).

From the A59 (airport autobahn): Head towards “Köln-Zentrum” (Cologne Center). The autobahn ends at the “Kölnarena/Henkelmännchen” in “Köln-Deutz”. Go straight through the underpass and get in the left lane heading towards “Deutzer Brücke” (Deutz bridge). Then follow directions for “From the A3 autobahn”.

From the A555 autobahn: Drive towards “Köln” (Cologne) until the “Autobahn Kreuz-Süd” (southern autobahn intersection) and head towards “Oberhausen/Olpe” on the A4. Take the second exit “Köln-Deutz” towards Kölnarena via the “Deutzer Brücke” (Deutz bridge). Then follow directions for “From the A3 autobahn”.

Taxi from Köln-Bonn airport:

Journey time approx. 30 minutes, fare € 20 to 25.

Walking from Cologne main station:

Cross the square in front of the cathedral and turn left into “Hohe Strasse” (shopping precinct). At “Kaufhof” department store, turn left into “Gürzenichstrasse”. Turn right into “Große Sandkaul”.