

The background is a deep blue with a series of concentric circles and radial lines, creating a spherical or lens-like effect. In the center, there is a white, stylized shape that resembles a camera lens or a stylized eye, with a small blue teardrop-like shape in the middle.

DREES &
SOMMER

2024 | 2025

FUTURE PROOFS

DRIVEN BY DRESO



A livable future is worth reading about: FUTUREPROOFS 2024/2025 shows how we face the future with confidence. This publication contains Drees & Sommer Group's financials, the reports of our Supervisory Board and Executive Board, as well as project highlights and solutions for Real Estate, Infrastructure and Industry. You can also read about how, as a sustainability pioneer and digitization driver, we are getting our customers and ourselves fit for the future.

REPORT OF THE SUPERVISORY BOARD

The Drees & Sommer Supervisory Board comprises Chair Dr. Johannes Fritz, Deputy Chair Dr. Bernd Gaiser, Yvonne Allner, Eva Dietl-Lenzner, Dr. Jürgen Laukemper and Dr. Axel Sommer

For Drees & Sommer, 2024 was characterized by both challenges and successes. Working with our customers, we were again able to initiate and progress a wide range of future-oriented projects. Internally, too, all signals are set for the future. Efficient structures and processes combined with targeted investments are ensuring that we get fit for 2030 – and beyond.

In addition, 2024 once again demonstrated that we can only make progress by working together. This was also evident at our 'Energy meets Industries' event last autumn where, for the second time, we brought together a cross-industry group of high-caliber experts and decision-makers to discuss specific solutions to accelerate decarbonization of the economy. The Supervisory Board expressly supports this approach.

This optimistic orientation was demonstrated in 2024 by numerous successful projects. These include, for example, the important fast-track Riedbahn railway upgrade, an infrastructure project with transregional appeal. And the Autostrom plus project, in which we are the lead partner of a consortium that was awarded the contract by Autobahn GmbH des Bundes – Germany's national motorway agency – to finance, plan, build and operate 99 new fast-charging hubs with around 482 charging points at unserved motorway rest areas.

These and similar projects show that it pays to show courage and act decisively instead of simply reacting. We also see this in our expansion plans. Where necessary, we have secured broader expertise for our customers through acquisitions both at home and abroad. Our merger with VVA at the beginning of 2025 marked an important step in our international growth. The acquisition of this US company, which was founded in 1994, further strengthens our position in the North American market. Headquartered in New York and specializing in project management and cost consulting, VVA offers interdisciplinary consulting services to customers at twelve regional offices.

Annual and Consolidated Financial Statements 2024

The auditing firm Baker Tilly, which was appointed by the General Meeting of Shareholders as auditor of the financial statements for the 2024 financial year, audited the annual financial statements and consolidated financial statements for 2024. These were prepared in accordance with the German Commercial Code (HGB), with the auditor issuing an unqualified audit opinion.



‘Take action and make progress instead of waiting and complaining.’

Dr. Johannes Fritz, Chairperson of the Supervisory Board of Drees & Sommer

The annual and consolidated financial statements and the associated management reports were discussed at our financial accounts meeting on April 29, 2025 in the presence of the auditor. The auditor reported on the scope, focus and significant findings of the audit and answered any remaining questions. The Supervisory Board duly the financial statements and management reports. The Supervisory Board also approved the Executive Board’s proposal to pay a dividend of EUR 1.74 per share from Drees & Sommer SE’s net income of EUR 86.8 million and to carry the remaining amount forward to new account. Our decision took into account the company’s financial position and earnings performance, medium-term financial and investment planning as well as the interests of the shareholders. The Supervisory Board thanks the Executive Board, Partners, managers and all employees for their outstanding commitment and teamwork over the past year, which again made it possible to achieve a good operating result.

What will 2025 bring?

We will not be resting on our laurels: On the one hand, we want to grow with our customers and their needs – and see huge opportunities for this both today and in the future. On the other hand, we want to remain alert to any change in the prevailing conditions for our business operations. We are ready to respond quickly and act decisively. We will be rolling up our sleeves and taking the lead rather than adopting a wait and see approach and then complaining.

Stuttgart, April 29, 2025

Dr. Johannes Fritz

from left: Dr. Jürgen Laukemper,
Yvonne Allner, Dr. Axel Sommer,
Eva Dietl-Lenzner, Dr. Johannes Fritz,
Dr. Bernd Gaiser

REPORT OF THE EXECUTIVE BOARD

Steffen Szeidl (CEO), Dierk Mutschler, Marc Schömbms

GUIDED BY CHANGE

The year 2024 was marked by global uncertainty: Geopolitical crises, significant energy price fluctuations, multiple interest rate increases, ongoing supply chain problems and costly material procurement also weighed heavily on the construction and real estate industries. Despite these difficult conditions, Drees & Sommer was able to hold its own in the 2024 financial year, posting sales of €964.2 million and an operating profit of €114.6 million.

Thanks to the strong will to innovate and promote change that has always been a core element of our corporate culture, Drees & Sommer operates from a position of strength. We take the pulse of the market, understand our customers' needs and consistently align ourselves accordingly. As a result, we are continuously optimizing our range of services, opening up new business areas with growth potential, and responding quickly to changing needs in the real estate, industry and infrastructure markets. Our investments always aim at securing and expanding our market and innovation leadership. To this end, we have strengthened our position by acquiring national and international holdings over the past year.

Global strength, sustainable growth

At the beginning of the year, we further deepened an existing relationship by fully integrating m3 Bauprojektmanagement GmbH into the Group in order to secure our long-term competitiveness in the field of construction management. At the European level, we have strengthened our market presence in the areas of building surveying, cost consulting and project management in Ireland and the United Kingdom by acquiring the Northern Irish company Johnston Houston. Our strong position is underpinned by the merger with the British engineering firm RSP Consulting Engineers, one of the leading engineering firms in the UK, which specializes in the financial sector, life sciences and data centers.

from left:
Dierk Mutschler,
Marc Schömbms,
Steffen Szeidl (CEO)



**‘We feel the pulse of the market,
understand our customers’ needs,
and consistently align
ourselves accordingly.’**

It is essential for us to expand globally in order to maintain an appropriate size compared to international competitors. The life sciences, semiconductor industry and data center sectors on the American continent also offer considerable market potential. And the office sector is also in urgent need of revitalization. To enable us to make the most of these opportunities, we initiated the merger with New York-based VVA Projects in 2024 and successfully completed the process at the beginning of this year.

Innovative approaches for integrated value chains

These competencies, which we want to expand in America, reflect one of Drees & Sommer’s core strengths: Our expertise is in demand with industrial customers, and we have a long-established reputation as a reliable partner for our globally active customers. We see change as an important guide. This is evidenced by the extremely successful ‘New Automotive World’ conference series initiated in 2024, which opened in July 2024 with Mercedes-Benz Group CEO Ola Källenius giving a keynote on the transformation of the automotive industry.

As far as the change in factory and building planning is concerned, we know that an integrated value chain ecosystem is crucial for our customers with international operations. To meet this need, we have been working with T-Systems since 2024 to promote the use of AI-based digital twins of production facilities. The NVIDIA Omniverse platform allows us to simulate all workflow processes – as well as the interaction between factory buildings and production facilities – right down to the smallest detail. This reduces costs, minimizes planning errors and creates the necessary agility for future product and manufacturing requirements.

Infrastructure as the backbone of the economy and society

When it comes to the future of infrastructure planning, innovative technologies will have to be deployed even more extensively. In numerous projects, both large and small, our interdisciplinary teams are focusing their efforts on public infrastructure as the backbone of the economy and society. Activities range from strategic maintenance management for dilapidated bridges and rail and road renovation schedules through to new power lines, power plants for renewable energies, district heating pipelines and hydrogen networks.

In all our infrastructure activities in 2024, we continued to pursue the goal of working with our customers to set new standards. One example of this was the successful renovation of the Riedbahn railway line, which was completed – with our support – in the record time of just five months. The mammoth project will serve as a blueprint for future Deutsche Bahn renovation projects. In short, Drees & Sommer can contribute its comprehensive know-how to Germany’s implementation of the non-partisan Agenda 2030: The goals range from ensuring an efficient, sustainable energy supply to a stable transport infrastructure and the expansion of our resilient and digital infrastructure.

Removing hurdles, picking up the pace

The recently adopted financial and defense package – which paves the way for billions of euros of investment in the repair of dilapidated infrastructure, in security and defense, and in the climate-friendly restructuring of the economy – sets an important course to ensure resilience and security in Germany and Europe. However, structural changes are also essential to achieving greater resilience in a rapidly changing world.

German and European bureaucratic hurdles must finally be removed to allow more innovation, sustainability and competitiveness. According to an analysis by Germany Trade & Invest, Europe’s construction companies are outperforming competitors in China and the US, and are planning and building all over the world. For Drees & Sommer, it is crucial that we focus on continuing to occupy a niche, namely through the global provision of the sophisticated services and special solutions that multinational corporations lack. Our teams take on a wide range of tasks worldwide: from initial planning and approvals to the coordination and monitoring of all trades on the construction site. We want to further intensify these activities – thus having a lasting impact on the built environment.

The high level of motivation, adaptability and resilience of our employees are what make our company successful. Despite more difficult conditions, our customers’ projects were always in the best hands. We would like to thank all our colleagues for this and for their tireless commitment, outstanding achievements and incomparable Dresco team spirit.

Stuttgart, April 29, 2025

Steffen Szeidl

Dierk Mutschler

Marc Schömbus

GROUP OPERATING RESULT 2024

PROFIT AND LOSS STATEMENT

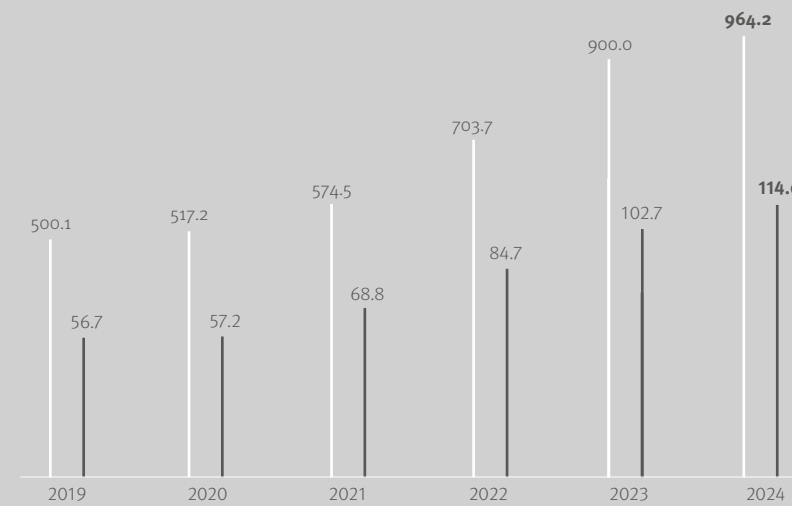
(in euros)

1.	Revenues	681,981,323	
2.	Change in work in progress	270,157,412	
3.	Other operating income	12,107,152	964,245,887
4.	Expenditure for purchased services	147,260,886	
5.	Personnel expenses	529,815,865	
	a) Wages and salaries	459,315,789	
	b) Social security costs and pension fund	70,500,075	
6.	Depreciation	25,435,966	
7.	Other operating expenses	144,955,236	847,467,954
8.	Income from shareholdings	-1,463,973	
9.	Income from other securities and from long-term loans	3,674,627	
10.	Interest and other expenses	4,411,584	-2,200,931
11.	Operating result		114,577,003
12.	Taxes on income and earnings	41,809,115	
13.	Other taxes	380,343	42,189,459
14.	Net income		72,387,544
15.	Shares held by other shareholders		521,650
16.	Profit brought forward less dividends		67,289,585
17.	Changes in equity as the result of purchase or sale of own shares		-15,679,397
18.	Group balance sheet profit		124,519,382

964.2 114.6

MILLION EUROS SALES

MILLION EUROS
OPERATING PROFIT



Group sale in million €

Operating profit in million €



6,500

EMPLOYEES AT OVER 70 LOCATIONS

Group sales grew by €64.2 m to €964.2 m (prior year: €900.0 m). Expenditure rose by €50.8 m to €847.5 m in the year under review (prior year: €796.7 m). Operating profit rose by €11.9 m to €114.6 m, with net income of €72.4 m.

BALANCE SHEET

ASSETS	(in euros)
A. Fixed assets	
I. Intangible assets	97,183,019
1. EDP software, licenses	11,791,356
2. Good will resulting from capital consolidation	85,391,663
II. Tangible assets	58,336,028
1. Land, rights equivalent to real property rights, and buildings	27,817,137
2. Other assets, operating equipment, fixtures and fittings	27,498,434
3. Payments on account and tangible assets under construction	3,020,457
III. Financial assets	4,587,991
1. Shareholdings	4,115,344
2. Other securities lending	472,648
B. Current assets	
I. Inventories	0
1. Work in progress	1,536,599,849
./. Advances received	-1,536,599,849
II. Receivables and other assets	149,839,249
1. Trade receivables	125,904,346
2. Receivables from shareholdings	573,553
3. Other assets	23,361,351
III. Securities	11,042,687
1. Other securities	11,042,687
IV. Checks, cash on hand, cash in banks	128,947,507
C. Deferred income (other)	9,502,445
D. Prepaid taxes	3,049,000
E. Positive difference from asset allocation	0
Balance sheet total	462,487,927

LIABILITIES	(in euros)
A. Equity	171,574,073
I. Subscribed capital	26,444,572
less nominal value of treasury shares	-1,167,112
II. Capital reserves	13,774,559
III. Revenue reserves	98,104
IV. Net income	124,519,382
V. Change in equity due to exchange rate difference	4,452,780
VI. Minority interests	3,451,788
B. Accruals	160,352,036
1. Accruals for pensions	2,623,551
2. Provisions for taxation	34,132,112
3. Other accruals	123,596,373
C. Liabilities	129,860,866
1. Bonds	20,080,855
2. Liabilities to financial institutions	13,553,235
3. Payments received on account of orders	34,117,203
4. Trade payables	22,417,484
5. Liabilities to shareholdings	0
6. Other liabilities	39,692,090
D. Deferred income (other)	700,951
Balance sheet total	462,487,927

37.1 %

EQUITY RATIO



The reconciliation of retained earnings of €124.5 m to equity, together with the subscribed capital, capital reserves and retained earnings, results in equity of €171.6 m. The equity ratio is 37.1%.

Accruals for pensions, taxes and variable remuneration rose by €12.1 m to €160.4 m. Liabilities, such as to suppliers, subcontractors and taxes, fell by €6.3 m to €62.1 m. Advance payments received on orders increased by €25.0 m to €34.1 m due to invoice timing. Liabilities to banks fell by €1.3 m to €13.6 m. In 2024, further profit participation rights were issued as part of the employee participation scheme. These are presented as bonds in the amount of €20.1 m.

Overall, total assets for 2024 amounted to €462.5 m (prior year: €422.0 m).



Drees & Sommer's sustainability performance was awarded a bronze medal by EcoVadis in 2024.



In April 2024, Drees & Sommer received the silver label from The Climate Choice for its comprehensive decarbonization measures.

APPROVAL OF OUR CLIMATE TAGETS

BY THE SCIENCE BASED TARGETS INITIATIVE (SBTi)



SCIENCE
BASED
TARGETS

DRIVING AMBITIOUS CORPORATE CLIMATE ACTION

SUSTAINABLE FUTUREPROOFS

As a **SUSTAINABILITY PIONEER**, Drees & Sommer has been supporting its clients for decades in the sustainable transformation of construction, real estate and infrastructure projects. It is then only logical that our own sustainability targets must be ambitious and, above all, scientifically sound. This is exactly where the Science Based Targets initiative (SBTi) comes in. It has developed the world's leading framework for setting science-based net-zero targets. Applying this framework ensures that companies and organizations develop climate targets that are in line with the 1.5 degree target set in the Paris Climate Agreement.

BASE YEAR 2023

As an international consulting company, around 60 percent of our emissions result from employee mobility (vehicle fleet, business travel, commuting). Purchased goods and services account for around 35 percent of our greenhouse gas emissions.



OUR VALIDATED TARGETS

NEAR-TERM SCIENCE-BASED TARGETS 2030

Scope 1 + 2

-42%

absolute

Scope 3

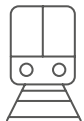
-51,6%

per employee from purchased goods and services, capital goods, energy-related activities, business travel, and commuting

OUR KEY REDUCTION MEASURES



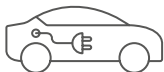
Transition of international offices to **renewable energy**



Implementation of **a sustainable travel policy**



Climate-friendly commuting options



Electrification of the travel, and commuting company car fleet



Cooperation with strategic **suppliers**



Procurement of circular **products**

NET-ZERO SCIENCE-BASED TARGETS 2045

Scope 1 + 2

-90%

absolute

Scope 3

-97%

per employee from purchased goods and services, capital goods, energy-related activities, business travel, and commuting

Excellent is the new good:
When it comes to environmental standards, the motto of the **innovative Hamø office complex in the Paris suburb of Saint-Denis** is 'to infinity and beyond'. The developers are aiming for certifications such as BBCA, HQE Excellent and BBC Effnergie (E2C1). The Hamø complex features a winning combination of work, retail and leisure space with a total area of 32,000 square meters. Drees & Sommer provided technical support for the groundbreaking project and made a significant contribution to its implementation.



Environmental pioneer at the gates of Paris



Affordable barrier-free living

BayernHeim GmbH is building a new urban district in Ingolstadt offering subsidized rental apartments for around 1,300 people. The project attaches the same level of priority to barrier-free living and spaces for social interaction as it does to energy-efficient, climate-friendly solutions. Also planned on the 21,000 square meter site are a daycare center and playgrounds as well as space for food & beverage and commercial use. Drees & Sommer has been providing project control services for the project since October 2021. → [More](#)

Attracting royal attention:

With a floor area of 31,500 square meters, **DPG Media Nederland's Mediaaert building in Amsterdam** is the largest hybrid-timber office building in Europe. King Willem-Alexander of the Netherlands attended the opening ceremony to see the innovative structure for himself. 2,000 employees from 25 media brands now enjoy the use of the offices, recording studios, function rooms, restaurants and the planted roof-top terrace. Drees & Sommer was responsible for management and quality control throughout project implementation.



Europe's largest hybrid-timber building

REAL ESTATE FUTURE PROOFS



Green campus in Bern

A new central campus is being built for the **Bern University of Applied Sciences (BFH)**. As part of a vibrant new district, it will offer accommodation for around 7,000 students and staff as well as for a further 3,500 residents. The precinct will be open to the public and feature

an urban stream, lawns, dry biotopes, playgrounds and a garden café. Drees & Sommer is general planner for the project and lead manager for the tender phase. Its experts are also responsible for construction logistics and sanitation planning.

Hybrid hotel



At first glance, the **Moxy Hotel** taking shape in Verona, near the Porta Nuova train station, looks like **standard accommodation for business travelers and tourists**. It has 131 rooms across four floors. But the special feature of the hotel is that the general contractor is using an innovative, highly industrialized timber-concrete hybrid construction system. Each element is prefabricated and fully traceable thanks to a QR code. Drees & Sommer is assisting the client, Vastint Italy, in project management.

Flagship project for the Circular Economy

The Cradle to Cradle® philosophy is the guiding principle behind **Drees & Sommer's new office building in Eindhoven**. The result is an inspiring work environment that features full material circularity. In collaboration with EPEA colleagues from Belgium, the Netherlands and Luxembourg, Drees & Sommer integrated air-purifying carpets and wall paints, and over 400 plants. All newly purchased materials and products are Cradle to Cradle certified, and the sustainability concept is rounded out with recycled furniture.

In-house job in Eindhoven



With an area of over 110,000 square meters, the **ZIN project is one of the largest urban mining projects in Europe**. It involves the renovation of Towers 1 and 2 of the Brussels World Trade Center. Drees & Sommer and EPEA supported the developer, Befimmo, with Cradle to Cradle® consulting services including identifying available materials, creating a Circularity Passport® and advising on deconstruction in accordance with the Cradle to Cradle principle. The project allowed the reuse of more than 1,000 tonnes of materials – including raised floors, partition walls, insulation materials and roof tiles – and recycling of a further 140 tonnes. → [More](#)

Developed by Immobel and Whitewood, the 18-floor **Multi Tower in Brussels** offers over 44,000 square meters of space. It is the Belgian capital's first carbon-neutral office building. 89 per cent of the existing concrete was reused, avoiding the generation of 3,259 tonnes of embodied carbon and saving 20,000 tonnes of waste and over 2,222 truckloads of cement. Drees & Sommer supported the client by monitoring the urban mining project – including the creation of the Circularity Passport®-Buildings. → [More](#)

Carbon-neutral all-rounder





The project contributes to UN Sustainable Development Goal (SDG) 11. For an overview of the United Nations SDGs visit <https://sdgs.un.org/goals>

The heritage-listed Global Tower soars some 110 meters into the sky in the heart of the Frankfurt central business district. The fully refurbished and completely revitalized office tower demonstrates how tradition and modernity can be sustainably combined. Drees & Sommer supported its clients with services including project management, tenant management and technical consulting.

“The 1970s called. They wanted their high-rise back!” At first glance, that certainly seems to have happened, because the facade of the Global Tower is a replica of the original on the listed building dating back to 1974. But from an engineering point of view, the former Commerzbank headquarters is now state of the art: The project developer, the Branicks Group, worked with SICORE Real Assets (formerly HANSAINVEST Real Assets) to create cutting-edge flexible office space. It not only caters to the needs of the work environment of the future, but also meets the highest sustainability standards, having achieved DGNB Platinum precertification.

REVITALIZED STYLE ICON



AS A MODEL FOR SUSTAINABLE CONSTRUCTION

“This project’s sustainable combination of old and new fascinated me from the very beginning. The Global Tower proves that existing buildings and modern work environments are not mutually exclusive, but can actually complement each other perfectly.”

Julia Pausch, Team Leader at Drees & Sommer

The Global Tower offers 33,000 square meters of leasable office space. One of the tasks was to find suitable tenants who would appreciate the central location and the high-quality fitout of the architectural icon. **Drees & Sommer supported the revitalization of the Global Tower** with a range of services from 2020 through to project completion in 2024. **In this way, the experts guided the project to its successful completion in terms of cost, schedule and quality. They also undertook the management of 14 tenants** – including companies from the technology, financial services, market research and data center sectors – on behalf of the lessor.

Thanks to a modular concept, Drees & Sommer was able to implement the entire letting process quickly – from the initial inspection with interested parties to handover of the finished office space. The experts strengthened the landlord’s position during negotiations by providing technical consulting services. A transparent and agile market approach also shortened the time required for remodeling. The team succeeded in handing over all the office space in the multi-tenant building on schedule. And because success creates trust, the client continues to count on collaboration with Drees & Sommer.

“It was particularly important to us to strengthen the position of our customers, Branicks and SICORE, and to provide them with schedule and cost certainty. Our technical advice, combined with a transparent and modular approach, helped us to excel in this respect,” explains Julia Pausch, who led the project on behalf of Drees & Sommer.

INFRA STRUCTURE FUTURE PROOFS



**Administration
building benefits
from alternative
execution model**

From ground-breaking ceremony to topping-out in under twelve months: The construction of the new **administration building in Kirchheim/Teck** proceeded swiftly in 2024. Drees & Sommer experts used an alternative execution model to reduce the number of interfaces in the project and ensure a high quality of build. From 2026, the building will offer over 100 workplaces that combine tradition and future-oriented sustainability, with features including a spectacular timber-hybrid construction, solar roof tiles, and geothermal and heat pump technology.



**Sustainable heat
without borders**

Drees & Sommer is supporting the **UNITED HEAT** project for the decarbonization of the heat supply in **Görlitz**. This involves climate-neutral heat generation plants and around ten kilometers of new inner-city pipelines to connect island grids. Drees & Sommer is acting as Project Management Consultant (PMC) to Stadtwerke Görlitz AG for this integrated German-Polish cross-border energy system.

[→ More](#)



**Climate-conscious
research and teaching**



**Luxembourg
is helping shape
the future of
automobility**

The automobility incubator developed by the **Luxembourg Ministry of the Economy** promotes innovative ideas and supports visionary companies that want to help shape the future of sustainable mobility. Realized with the support of Drees & Sommer, the building offers facilities that include office space, conference rooms, showers, a kitchen and a restaurant. The specialists attached great importance to the C2C model and dismantlable materials with a low carbon footprint.

Hamburg's Helmut Schmidt University aims to create a campus that not only imparts knowledge and promotes research but also serves as a model for climate protection. The existing campus with some 2,500 students and over 1,000 staff is being restructured while remaining in full operation. The master plan drawn up by Drees & Sommer provides for a climate-neutral campus with a high level of user amnity, sustainable materials and plenty of natural spaces.



360-degree views of high-tech and healing architecture

Ground-breaking ceremony at the **Aschaffenburg-Alzenau Hospital**: The new surgical center with eleven state-of-the-art operating theaters will set new standards. It will combine digital high-tech, a human approach, state-of-the-art medical technology and sophisticated healing architecture. The aim is to improve patient recovery and provide optimal working conditions for all staff. As a long-standing partner of the client, Drees & Sommer is responsible for coordinating planning with the State Ministry and the Government of Lower Franconia.

As a part of the national phaseout of coal, **the Fuel Switch project will see EnBW** shut down its coal-fired power plants in Heilbronn and Altbach/Deizisau. The aim is to replace each with a natural gas-fired combined cycle power plant for co-generation of heat and power. Drees & Sommer is responsible for construction site management at both locations. [→ More](#)

Coal-fired power plants complete the Fuel Switch



Legacy building expertise for modernization of central station



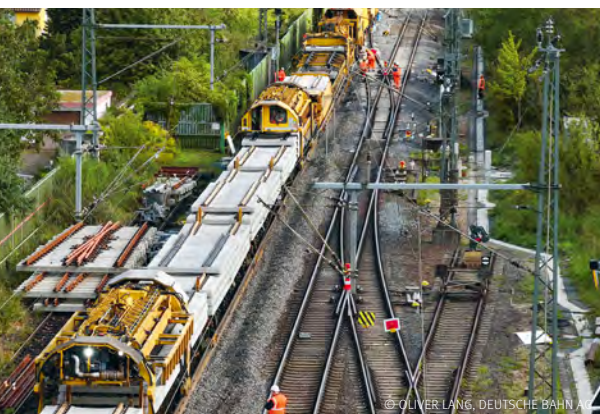
The **Frankfurt Central Station** project is divided into four stages and covers the redesign of Level B and the restructuring of the plant and equipment areas. The renovation and modernization project involves the redevelopment of a usable area of 61,000 square meters and a gross floor area of 55,000 square meters. The aim is to make essential enhancements to passenger amenity and sense of security. Construction site safety is also a key goal. Drees & Sommer is adopting various measures, including sophisticated logistics, to achieve realize these goals. [→ More](#)

How do you make a sewage treatment plant fit for the future? That is a question that **Stuttgart wastewater drainage and treatment** works staff and Drees & Sommer experts have been working on together. The project aims to digitize the plant's processes to meet future challenges and establish future-proof systems. This includes the reengineering of core treatment processes, the use of AI and the digitization of the plant premises and buildings. [→ More](#)

Stuttgart digitizes sewage treatment plant



The general renovation of the Riedbahn, the busy railway line between Frankfurt and Mannheim, was a prestigious major project. With Drees & Sommer's help it was completed in record time.



RIEDBAHN BACK IN OPERATION AFTER JUST FIVE MONTHS



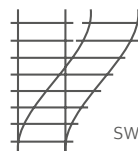
20

stations modernized,
upgraded to provide for
barrier-free access, and
made more attractive



117

kilometers of new track laid to
make the infrastructure fit for
the future



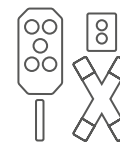
152

switches modernized and rebuilt
to provide additional alternative
options and increase operational
flexibility



16

kilometers of noise
abatement walls
modernized and rebuilt



1,200

items of control and safety
equipment brought up to
the state of the art



The project contributes to UN Sustainable Development Goal (SDG) 9. For an overview of the United Nations SDGs, visit <https://sdgs.un.org/goals>

Since mid-December 2024, long-distance, regional and freight trains have been running again on the Riedbahn line. The success of the project was celebrated with the official inauguration of the track. Drees & Sommer supported Deutsche Bahn (DB) with a wide range of services. **A special feature of the project is that the general refurbishment of the Riedbahn will be used as a template for the comprehensive upgrade of some 1,500 km of track in the highly congested DB network through 2027.**

A Drees & Sommer team used Lean Construction Management (LCM) to ensure the efficiency of processes. The specialists also contributed their expertise with a range of services, such as project and contract management, as well as project and schedule control. The interdisciplinary team supported DB with the **renewal of all technical systems and the modernization of stations along the line section.** Since the beginning of 2020, Drees & Sommer has also been involved in the renewal and renovation of several Riedbahn interlocking systems. The aim was to improve the operational quality of the systems and to ensure their availability.

Anticipatory planning with digital management tools instruments was indispensable for logistics. This ensured that all components were available on site and on time despite any material and resource shortages or unreliable supply chains. → [More](#)





INNOVATIONS FOR INFRA- STRUCTURE

The various elements of supply and waste disposal infrastructure – including roads, bridges, waterways, charging stations, heating networks and green spaces – work closely together to form the backbone of societies worldwide. They enable us to live together and facilitate an efficient economy and a livable future. But we need innovation to future-proof infrastructure. Are you ready for the infrastructure of the future?

The experts at Drees & Sommer combine specialist knowledge with in-depth industry expertise – and look forward to exchanging ideas with you. → [More](#)



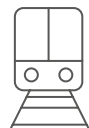
Solar highways – vertical or tilted PV panels on highways and expressways – offer great potential for enhancing the road network. They form part of an **integrated energy system** that encompasses the generation, storage and use of renewables.



Renewable energy – combined with the expansion and conversion of heating networks – is essential to give impetus to **green heat generation**. In addition to high-capacity heat pumps and (deep) geothermal energy, **waste heat** from industrial processes is a valuable resource.



Electromobility is growing in popularity worldwide. But its success is dependent on the provision of full-coverage **charging infrastructure**. Alongside professional planning and consulting, smart grids and AI control systems are fundamental requirements for creating such infrastructure.



Local public transport also has an important role to play, as it offers great benefits, including reduced carbon emissions. The prerequisite for its increased uptake is the ongoing **renovation and optimization** of public transport facilities and equipment.



Many bridges are in need of repair. **Bridge rehabilitation** based on targeted **maintenance management** promises a solution here – for many of the 130,000 or so road and railway bridges in Germany, for example.



Whether heat waves, damaging winds or torrential rainfall, extreme weather events are becoming more frequent and lasting longer in Europe, especially in metropolitan areas. To mitigate the impacts, we need **climate adaptation concepts** – such as the **sponge city**.



Urban cable cars allow you to bypass – or fly over – congestion on the ground. An increasing number of cities are embracing this technology – and with good reason: **Studies** show that this means of transport is unbeatable in terms of cost-benefit.

INDUSTRY FUTURE PROOFS

High-rise laboratory buildings for the health sector



The new **Pharma Research and Early Development (pRED) center** has been opened **at Roche's headquarters in Basel**. Some 1,800 researchers work in 150 laboratories spread over 33 floors in the high-rise blocks, an office building and a congress center. The new collaborative building design aims to ensure that innovative medicines can be made available to patients faster. Drees & Sommer acted as general planner for this complex project from start to finish. Both the move-in and inauguration of the pRED Center took place in 2024.

→ [More](#)

Logistics in a green oasis



A green oasis has been created around the **L'Oréal distribution center in Muggensturm** near Karlsruhe. The new center features 7,400 solar panels, a rainwater retention basin, and habitat for 173 animal species, some of which are endangered. Drees & Sommer provided comprehensive support for this sustainable biodiversity concept, which was awarded the DGNB Gold Certificate for Biodiversity-Promoting Exterior Spaces as well as several other awards (including the Realty Award and the Impact Award as Best Biodiversity Project).

→ [More](#)

An office building like a village



With a barista bar, marketplace, quiet booths and focus zones, the modern work environment in **dormakaba's new office building** promotes employee exchange and cooperation. Starting with the old dormakaba factory hall in Zurich, the workplace experts at Drees & Sommer designed an urban ecosystem that adapts flexibly to the needs of users thanks to its small-town vibe.



Semi-conductor hotspot Dresden

ESMC/TSMC's first European chip factory is taking shape in Dresden – a significant milestone for the global semiconductor industry. TSMC will produce important logic chips for the automotive and industrial sectors at the plant in collaboration with its partners NXP Semiconductors, Infineon Technologies and Bosch. Drees & Sommer is supporting the construction project and the implementation of this future-oriented high-tech factory.

Main plant goes all electric



From 2026, the **BMW main plant in Munich** will focus exclusively on the production of all-electric vehicles of its 'Neue Klasse' range. Drees & Sommer is supporting the conversion with project management, construction management and BIM management services. Lean Construction Management will optimize the construction process, and a digital twin will increase planning certainty. Together with BMW and PORR AG, the team is using a partnering model to efficiently implement the complex transformation without disrupting factory operation.

The **BMW Group has opened its largest test site** for future mobility solutions in Sokolov in the Czech Republic. With an area of over 600 hectares, the site allows experts to test highly- and fully-automated driving and parking systems under realistic conditions. Drees & Sommer supported the client in all fields of project management, lean design and lean construction management as well as quality assurance services until final handovers. The project's sustainable solutions included the use of green electricity, an innovative water management system, and promotion of local biodiversity.

Ready for Take-off



With a length of 400 meters, **Pier H at Frankfurt Airport's new Terminal 3** is the first subproject to be completed and accepted. More than 60 Drees & Sommer employees – an interdisciplinary and international team with a wealth of experience – have been working towards this milestone for several years. From scheduling to fire protection and from construction management to commissioning, the team brings together more than 20 disciplines. The next goal is the opening of the new terminal in 2026. → [More](#)

Test track goes high-tech



BATTERY CELL MANUFACTURING FACILITY: THINK BIG, ACT GREEN

Thanks to battery cell production,
the goal of driving emissions-free
electric vehicles is now within reach.
The new Agratas production plant is
a pioneer of sustainable industry.





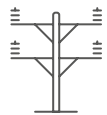
Up to

4,000

jobs will be created at the factory site –
and thousands more along the supply chain.



The project makes a substantial contribution to UN Sustainable Development Goals (SDG) 9 and 12. For an overview of the United Nations SDGs visit <https://sdgs.un.org/goals>



The facility's energy supply is

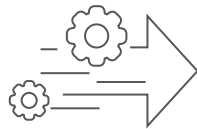
100 %

electrified, enabling a roadmap
to net zero.



The factory design combines maximum
efficiency with eco-friendly production

A sustainable energy concept
ensures resource-efficient production



The Tata Group is investing

£ 4,000,000,000

in the new Battery Cell Manufacturing Facility

One of Europe's largest battery cell factories is taking shape on the Gravity Smart Campus in Bridgwater, Somerset, UK. Commissioned by Agratas, the Tata Group's battery solutions subsidiary, the new production plant is setting a pioneering example for the energy transition and a climate-friendly future. Together with Stantec, a global leader in sustainable design and engineering, **Drees & Sommer is supporting the project with its expertise in the areas of battery cell production as well as clean-room and dry-room design.**

Close cooperation between Drees & Sommer and Stantec allows integration of the latest technologies and efficient processes. "We draw on our **many years of experience with high-tech and industrial buildings** and are committed to **close cooperation with Stantec.**" says project director Daniel Bas Gamez. The focus is on ensuring a state-of-the-art, resource-efficient production process. This will then meet both environmental standards and the exacting requirements of modern battery cell production.

Sustainable batteries for a climate-friendly future

Agratas takes a holistic approach to sustainability: Agratas takes a holistic approach to sustainability, using up to 100% low or zero carbon energy once the facility is operational. This makes the Battery Cell Manufacturing Facility on the Gravity Smart Campus a flagship project for sustainable industry and shows how innovation and environmental awareness can go hand in hand.

DIGITAL FUTURE PROOFS

The world needs more digital pioneers. We can help you become one. As a **DIGITALIZATION DRIVER**, we can support you in all aspects of digital transformation – from strategy development to implementation and fine-tuning. We are not only consultants, but also act as a sparring partner, thought leader and driver on all aspects of digitization. We also have an extensive digital and innovation ecosystem to ensure that you achieve optimum outcomes on your digital journey. Take a look at our current digitalization successes:

DRESO.AI

Developed by employees for employees, the platform promotes the exchange of expertise and knowledge in an environment protected by the highest cybersecurity standards. Dreso. AI simplifies time-consuming routine tasks – such as the analysis of tender documents.

→ **More: Great minds – smart concepts:
How proprietary AI is reducing workload at
Drees & Sommer**



‘Global digitalization opens up enormous opportunities for innovative business models. We create measurable added value with AI-based solutions and process automation.’

Sascha Hempel, Partner at Drees & Sommer

CYBERSECURITY

Our cybersecurity experts are supporting the EU Horizon Europe Innovation SENSE project, which is investigating how virtual reality and the metaverse can improve the quality of life in European cities. The focus is on immersive digital twins of real cities that allow planners, citizens and decision-makers to interact with 3D environments to test ideas, explore scenarios and make better decisions.

→ [More about urban planning in the virtual world](#)

EXPERIENTIAL: AV AND MEDIA TECHNOLOGY

VfB Stuttgart has raised the bar for stadium technology with its new grandstand. Our experts from macom – Part of Drees & Sommer designed and successfully implemented various new media technology solutions for this project: The highlight is an 80-metre-long LED wall with a one-way mirror that allows VIP visitors to get close to their favorite players as they enter the stadium.

→ [More: VfB Stuttgart 1893 AG – macom](#)

‘As innovation leader, we provide our customers with digital solutions – tailored to complex requirements and a high-performance business.’

Jonathan Davis, Associate Partner at Drees & Sommer

Blue Waves

Der Podcast für die Business Leaders

Green data centers: striking a balance between efficiency and environmental responsibility

A clear vision and a well-thought-out strategy are key to making data centers a cornerstone of a carbon-neutral economy. → [Find out more in our publication 'Green Data Centers as a Vision of the Future'.](#)



STUDIES AND EVENTS – THE FUTURE IN NUMBERS

Great minds – smart concepts

Drees & Sommer is one of 30 German companies worldwide selected by Microsoft as a test customer for its AI tool Copilot 365. Our very own Dreso.AI is also in the test phase – and is achieving efficiency gains of up to 90 percent for some everyday automated processes. → [Learn more AI insights in the Blue Waves podcast \(available only in German\)](#)

Energy meets Industries

At the end of 2024, we brought together a cross-industry group of high-caliber experts and decision-makers for the second time to discuss how to drive decarbonization of the economy. The event once again confirmed the importance of cross-industry exchange on sector coupling – which is why the third ‘Energy meets industries’ dialog will take place next year on October 22 and 23, 2025.

→ [Register now](#)



Spotlight on climate-friendly mobility

Countless insights and a common mission: to shape the sustainable future of battery technology and electromobility. More than 500 participants exchanged views on trends and innovations at ‘New Battery World 2025’. → [Become part of the ‘New Automotive World’ networking initiative and shape the future of mobility together with us.](#)

PEOPLE. PROMOTE. POSITIVITY.

We asked our Partners what makes them optimistic about the future and what opportunities they see in their field. You can read their personal handwritten responses here. Three themes recur over and over again: The importance of people, the ability to realize plans, and the determination to push boundaries. Let yourself be inspired by this spirit.

*Production is moving closer to Europe again –
we have the right solutions and the local know-how
for successful implementation!*

Philipp Gansch

*Pioneering spirit, innovative strength
and a commitment to quality
that always puts our customers
and their projects at the center.*

Boris Matic

*Improving our infrastructure – the challenge and opportunity
for our society and Drees & Sommer as a company. A matter
close to my heart!*

Dr. Markus Koch

*Standing still is no option!
Time to act!
Therefore we have the right people
and sustainable solutions on board!*

Steffen Szeidl

*Our technical infrastructure is the backbone
on which a sustainable and future-proof society
is built. It enables us to create innovative
solutions that not only meet our current
needs, but also meet the challenges of
future generations.*

Sebastian Beck

*Drees networks always create diversity –
and success is always the result of
good co-operation!*

Björn Jesse

*What makes me optimistic as CHRO:
AI doesn't replace us – it creates
space to reimagine the human
side of work as catalyst for true
cultural transformation and
progress!*

Diana Wiedmann

With our highly motivated employees we are well positioned to master future challenges. Erfolgreich!

Rainer Preisshofen

Our customers value our performance and expertise in demanding projects.

Andreas Schele

With security into a resilient future - that's what makes me think positive, because new risks require new strategies - for us and for our clients.

Thomas Hofbauer

The world is changing - and we are changing with it!

The many challenges of our time present many opportunities that need to be managed.

And: everything usually turns out well in the end!

Simon Dietzfelbinger

"The European industrial transformation is progressing - and we are ideally positioned to benefit from it!"

Prof. Dr. Thomas Harlfinger

We know how to make our customers successful.
We rethink public projects.

Stefan Heselschwerdt

Our current transformation is establishing a new culture of collaboration, enabling us to provide even more effective consulting to our clients.

Sascha Kilb

With major mandates in Greensteel projects, we are actively contributing to the transformation of the industry. These investments in new technologies, along with the courage and trust of our clients, make me optimistic.

Christoph Gawlik

Together with our employees, their motivation, dynamism, expertise, innovative strength and willingness to perform at the highest level, we are able to deal with almost any challenge.

Manuel Dorn

We are broadly positioned, focus on future trends and are constantly expanding our involvement in the future in infrastructure cluster.

Jörg Wohlfarth

The more challenging the environment and the markets become, the more opportunities and development possibilities there are for us in consulting. The current challenges of our clients are our opportunity to grow, innovate, and actively shape the future.

Thomas Häusser

The Frankfurt Rhine - Main region offers enormous opportunities - by working closely with local players we are actively shaping the future of the region.

Klaus Hirt

The energy transition makes me feel positive because it shows that by networking and collaboration in the industry, infrastructure, and the real estate clusters, we shape a sustainable and secure future together.

Dierk Mutschler

There are still some open issues: for example, the need for housing, how to deal with existing buildings or the challenges of infrastructure. We have answers to these questions and are working on these issues with our projects!

Heike Titze

"The infrastructure transformation in Europe is a major challenge – and an even greater opportunity."

Frank Bornmann

We shape our future through innovation, quality and in the spirit of best for project.

Mirco Beutelspacher

As a society, we are facing complex challenges for our built environment. Cooperative and interdisciplinary collaboration is more in demand than ever. The task of (project-) management will be to orchestrate a wide range of specialist expertise into an optimal solution. This is what we stand for – independently and with more than 50 years of practical experience.

Daniel Seibert

The forthcoming major investments require reliable partners who can ensure project success even in difficult waters by providing interdisciplinary expertise and sufficient manpower.

Drees & Sommer is the reliable partner that is ideally positioned to meet these challenges.

Jörg Ewald-Lincke

1 KEY SIGNIFICANT OPPORTUNITIES IN INNOVATIVE BUSINESS MODELS DRIVEN BY UNSTOPPABLE GLOBAL DIGITIZATION DREES & SOMMER LEVERAGES DIGITAL VENTURES, DATA & AI SOLUTIONS, AND PROCESS AUTOMATION TO ENHANCE EFFICIENCIES, CREATE VALUE, AND OPEN NEW MARKETS FOR OUR CLIENTS. WE ADVISE & IMPLEMENT.

Sascha Hempel

I am positive that we are continuously developing innovative solutions that help our customers to achieve their goals more efficiently!

Markus Weigold

Our integrated solutions for design and project management help our clients to focus on their business.

Dirk Kahl

OUR MARKET- AND CUSTOMER- ORIENTATED SOLUTIONS MAKE THE DIFFERENCE. WE UNDERSTAND OUR CLIENTS, WE ARE WHERE THEY NEED US. THIS AGILITY IS CONVINCING YESTERDAY, TODAY AND TOMORROW.

Philipp Späth

WE UNDERSTAND THE NEEDS OF OUR CUSTOMERS AND TAKE RESPONSIBILITY TO SUCCESSFULLY MEET THEM. PEOPLE MAKE THE DIFFERENCE!

Marc Schömbbs

The transformation of the markets brings far-reaching changes – but also opportunities. Our sector-specific teams, international experience, a global network and broad professional expertise create real added value.

Florian Langlotz

We understand our customers core business and turn that inside into our innovations of tomorrow. With our one-stop-shop approach, we bring ground breaking brighter projects to life that not only move the markets, but also attract visionary minds and top talent eager to shape the future of our company

Frank Silber

Our team represents passion, expertise and Commitment! For these are essential components for creative, sustainable and scalable solutions that guarantee success for our customers increasingly demanding projects.

Jürgen Brandstetter

Infrastructures connect us humans, not only regionally and nationally but also across borders. For this reason alone, and not just because of the investment techlog, a well-functioning infrastructure is essential for the provision of societal life.

Claus Bürkle

Thinking out of the box and Combining future topics?

We need to think about data centers, waste heat recovery and battery storage together to create something truly sustainable and innovative.

Klaus Dederichs

The positive trends, such as increasing adoption of digital tools and the focus on sustainable construction practices, give me great confidence. Our capabilities position us well to deliver projects efficiently and sustainably.

Kenneth Wood

AI agents in engineering & design boost our efficiency, innovation, and competitiveness - they offer tremendous opportunities by automating complex calculations, accelerating design processes, and enabling data-driven decision making at scale.

Veit Thurm

To leverage the technological revolution both for internal efficiency gains and new business models on the market. Drees & Sommer as AI pioneer and leader far beyond the industry.

Patrick Theis

The solutions for the transformation to a climate-neutral future are primarily technical and are already available today.

Prof. Dr. Michael Bauer

The Partners, the Associated Partners and around 6,500 colleagues work day in, day out on future-proof solutions for you – or a world in which we all want to live.

What challenges are you taking on?

And where can our expertise help to enhance your future prospects? We look forward to engaging in a dialog with you.

Please get in touch: futureproofs@dreso.com

The background is a deep blue with a network of thin, dark blue lines that create a complex, geometric pattern of triangles and polygons. The lines vary in thickness and orientation, giving the impression of a stylized, abstract landscape or a technical drawing.

IMPRINT

Drees & Sommer SE
Obere Waldplätze 13
70569 Stuttgart
Phone +49 711 1317-0
info@dreso.com
www.dreso.com

**DREES &
SOMMER**

DRIVEN BY TOMORROW